

Country Rating

Denmark

Grade: **A-**
Score: **79.01%**
Rank: **2 out of 45**

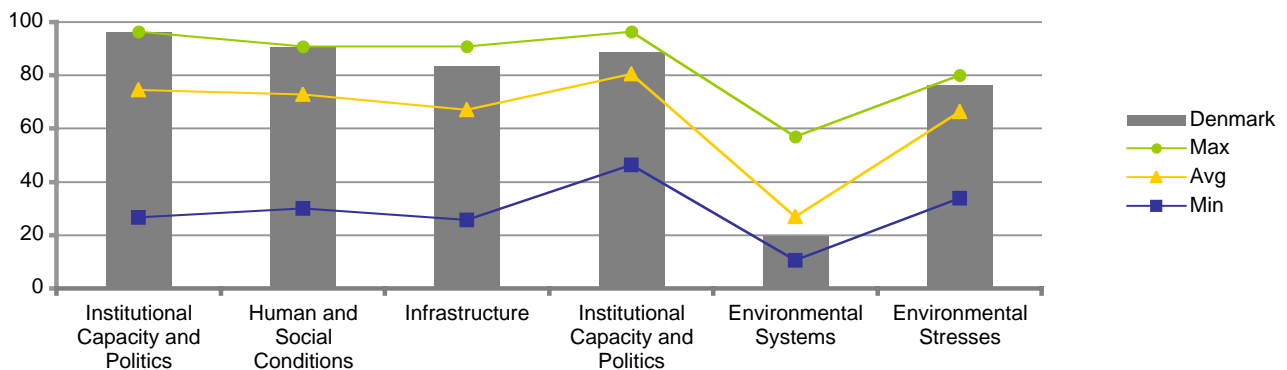
General Information

National territory (2004):	43,090.00 [in km ²]
National population (2003):	5,364.00 [in 1,000]
Population density (2003):	124.48 [persons / km ²]
Average annual population change (2003):	0.24 [as % of national population]
GDP per capita (2002):	30,940.00 [in USD (PPP)]
Human Development Index (2002):	17.00 [Rank]
Gender-related Development Index (2002):	13.00 [Rank]

Exclusionary Criteria

No violation of exclusionary criteria.

Benchmark Results



Strengths & Weaknesses

Social Rating

Institutional Capacity and Politics

- + human rights comprehensively observed
- + high expenditure on development aid relative to GDP
- + high expenditure on education
- + little corruption

Human and Social Conditions

- + strong representation of women in politics/parliament
- + low incidence of discrimination against minorities
- + conditions of employment
- + limited working week
- + high per capita income

Environmental Rating

Institutional Capacity and Politics

- + above-average implementation of environmental protection programs

Environmental Systems

- + high proportion of total agricultural area farmed organically
- + low proportion of degraded land area
- low level of renewable fresh water resources per capita
- low level of biodiversity

Environmental Stresses

- + generally low emissions of air pollutants relative to GDP
- + low water consumption relative to GDP
- + low energy consumption relative to GDP
- + no nuclear power stations
- high proportion of land area used for agriculture

1.	Institutional Capacity and Politics	40.0%	A+
1.1.	Political system and basic rights	50.0%	A+
1.1.1.	<u>Political system</u> The country is a constitutional monarchy with parliamentary democratic rule.		[US Dept]
1.1.2.	<u>Free elections</u> Citizens periodically choose their representatives in free and fair multiparty elections.		[US Dept]
1.1.3.	<u>Separation of powers</u> The judiciary is independent.		[US Dept]
1.1.4.	<u>Freedom from political arbitrariness</u>		
1.1.4.1.	<u>Political and other extrajudicial execution</u> There were no reports of political or other extrajudicial killings.		[US Dept]
1.1.4.2.	<u>Politically motivated disappearances</u> There were no reports of politically motivated disappearances.		[US Dept]
1.1.4.3.	<u>Torture and other cruel, inhuman, or degrading treatment or punishment</u> The law prohibits such practices, and there were no reports that officials employed them.		[US Dept]
1.1.4.4.	<u>Arbitrary arrest, detention, or exile</u> The law prohibits arbitrary arrest and detention, and the Government observes this prohibition.		[US Dept]
1.1.5.	<u>Freedom of movement</u>		
1.1.5.1.	<u>Freedom of movement within the country</u> The law provides for these rights, and the Government respects them in practice.		[US Dept]
1.1.5.2.	<u>Freedom of foreign travel, emigration, and repatriation</u> The law provides for these rights, and the Government respects them in practice.		[US Dept]
1.1.6.	<u>Freedom from arbitrary interference with privacy, family, home, or correspondence</u> The law prohibits such practices, government authorities generally respect these prohibitions, and violations are subject to effective legal sanction.		[US Dept]
1.1.7.	<u>Freedom from bodily harm/ death penalty</u> The country's law does not provide for the death penalty for any crime.		[ai]
1.1.8.	<u>Freedom of speech and press</u>		
1.1.8.1.	<u>Status of freedom of speech and press</u> The law provides for freedom of the press, and the Government respects this right in practice.		[US Dept]
1.1.8.2.	<u>Press Freedom Index (Reporters Without Borders)</u>	Data Range	Trend I
	2004: 0.50 [Index]	{0.50...92.33}	+
			+
			[RWB]
1.1.9.	<u>Freedom of assembly</u>		
1.1.9.1.	<u>Freedom of peaceful assembly and association</u> The law provides for these rights, and the Government respects them in practice.		[US Dept]
1.1.9.2.	<u>The right to organize and bargain collectively</u> Collective bargaining is protected by law and is widespread in practice. The law prohibits antiunion discrimination by employers against union members and organizers, and there are mechanisms to resolve disputes.		[US Dept]

1.1.10.	<u>Prohibition of child and forced labor</u>				
1.1.10.1.	<u>Prohibition of forced or compulsory labor</u> Forced or bonded labor, by adults or children is prohibited by law, and this prohibition is enforced by the Government. Trafficking in persons, particularly in women, is a problem, which the Government has taken steps to address.				[US Dept]
1.1.10.2.	<u>Status of child labor practices and minimum age of employment</u> The minimum age for full-time employment is 15 years. Strict employment rules for those under 18 years of age are in place. The minimum age for any type of work is 13 years.				[US Dept]
1.1.10.3.	<u>Child soldiers fighting in recent and/or ongoing conflicts</u> According to the Coalition to Stop the Use of Child Soldiers, there are no ongoing conflicts in this country where child soldiers are involved. The minimum age of - compulsory or voluntary - recruitment to armed forces is 18.				[CS]
1.1.11.	<u>Freedom of religion</u> The Constitution provides for religious freedom, and the Government respects this right in practice.				[US Dept]
1.1.12.	<u>Freedom of asylum</u> The law provides for the granting of refugee or asylum status in accordance with the 1951 U.N. Convention Relating to the Status of Refugees and its 1967 Protocol. The Government cooperates with the U.N. High Commissioner for Refugees and other humanitarian organizations in assisting refugees. There were no reports of the forced expulsion of refugees to a country where they feared persecution or of those having a valid claim to refugee status.				[US Dept]
1.2.	Participation in international treaties			10.0%	A+
1.2.1.	<u>International Covenant on Economic, Social and Cultural Rights (UN)</u> The country has ratified the International Covenant on Economic, Social and Cultural Rights.				[UN]
1.2.2.	<u>ILO Fundamental Conventions</u> The country has ratified all of the eight Fundamental Conventions of the ILO on forced labor, freedom of association, discrimination, and child labor.				[ILO]
1.2.3.	<u>Convention on the Rights of the Child (UN)</u> The country has ratified the Convention on the Rights of the Child.				[ICRC]
1.2.4.	<u>International Court of Justice (UN)</u> The country recognizes the International Court of Justice.				[UN]
1.2.5.	<u>Rome Statute of the International Criminal Court (UN)</u> The country has ratified the Rome Statute of the International Criminal Court.				[ICRC]
1.2.6.	<u>Convention on Biological and Toxin Weapons (UN)</u> The country has ratified the Convention on the Prohibition of the Development, Production and Stockpiling of Bacteriological (Biological) and Toxin Weapons and on their Destruction.				[ICRC]
1.3.	Public spending			10.0%	B+
1.3.1.	<u>Military expenditure</u>		Data Range	Trend I	Trend II
	2002:	1.60 [as % of GDP]	{0.00...5.20}	+	o
1.3.2.	<u>Net official development assistance (ODA)</u>		Data Range	Trend I	Trend II
	2002:	0.96 [as % of GNP]	{0.13...0.96}	+	-
1.3.3.	<u>Public expenditure on education</u>		Data Range	Trend I	Trend II
	2001:	8.30 [as % of GDP]	{1.30...8.30}	+	
1.3.4.	<u>Public expenditure on health</u>		Data Range	Trend I	Trend II
	2001:	7.00 [as % of GDP]	{0.60...8.10}	-	+
1.3.5.	<u>Central government total debt</u>		Data Range	Trend I	Trend II
	2003:	47.40 [as % of GDP]	{3.42...154.62}	+	+
1.3.6.	<u>Outstanding contributions to the United Nations regular budget</u> There are no outstanding contributions to the United Nations regular budget from prior years.				[UN]

1.4.	Non-governmental institutions		10.0%	A+	
1.4.1.	<u>Diversity of press</u> A wide variety of views and opinions is available among the highly competitive print and broadcast media.			[BBC, US Dept]	
1.4.2.	<u>Diversity of trade unions</u> Extensive trade union freedoms are established and a variety of organizations is in place. According to the International Confederation of Free Trade Unions, there are no major violations of trade union rights.			[ICFTU]	
1.4.3.	<u>External monitoring</u> A number of human rights groups operate without government restriction, investigating and publishing their findings on human rights cases. Government officials are cooperative and responsive to their views.			[US Dept]	
1.5.	Political stability		10.0%	A+	
1.5.1.	<u>Armed conflicts and terrorism</u> According to the Heidelberg Institute on International Conflict Research, the country is currently not involved in any violent or non-violent conflict.			[HIIC, SIPRI]	
1.5.2.	<u>Refugees by country of origin</u>	Data Range	Trend I	Trend II	
	2003:	0.00 [as % of national population]	{0.00...0.52}	+	[UN]
		0.00 [in 1,000]			
1.6.	Corruption and money laundering		10.0%	A	
1.6.1.	<u>Corruption (Index Transparency International)</u>	Data Range	Trend I	Trend II	
	2004:	9.50 [Index]	{2.00...9.70}	-	[TI]
				o	
1.6.2.	<u>Money laundering</u> According to the Financial Action Task Force on Money Laundering (FATF), the country has implemented adequate anti-money laundering measures.			[FATF]	
2.	Human and Social Conditions		40.0%	A	
2.1.	Equal rights		16.7%	A	
2.1.1.	<u>Discrimination</u>				
2.1.1.1.	<u>Equality before the law</u> The Government's operations and extensive public services do not discriminate on the basis of any of race, sex, religion, disability, language, or social status.			[US Dept]	
2.1.1.2.	<u>Discrimination against women</u> Legally, women have the same rights as men. While there is no overt discrimination against women, domestic violence and economic discrimination remain problems.			[US Dept]	
2.1.1.3.	<u>Discrimination based on disability</u> There is no discrimination against disabled persons in employment, education, or in the provision of other state services.			[US Dept]	
2.1.1.4.	<u>Discrimination against national, racial, or ethnic minorities</u> Incidents of racial discrimination and racially motivated violence occur but are rare. The Government effectively investigates and deals with cases of racially motivated violence.			[US Dept]	

2.1.2.	Equal opportunities				
2.1.2.1.	Female primary age group enrolment	Data Range	Trend I	Trend II	[UN]
	2001:	100.00 [as % of male ratio]	{74.00...102.00}	+	
2.1.2.2.	Female secondary age group enrolment	Data Range	Trend I	Trend II	[UN]
	2001:	103.00 [as % of male ratio]	{65.60...120.00}	+	o
2.1.2.3.	Female adult literacy	Data Range	Trend I	Trend II	[UN]
	2002:	100.00 [as % of male rate]	{53.00...102.00}	+	
2.1.2.4.	Seats in parliament held by women	Data Range	Trend I	Trend II	[UN]
	2004:	38.00 [as % of total]	{4.40...45.30}	+	o

2.2. Health 16.7% A-

2.2.1.	Life expectancy at birth	Data Range	Trend I	Trend II	[UN]
	2002:	76.60 [in years]	{60.80...81.50}	+	+
2.2.2.	Infant mortality	Data Range	Trend I	Trend II	[UN]
	2002:	4.00 [per 1,000 live births]	{3.00...83.00}	+	o
2.2.3.	Infants with low birth-weight	Data Range	Trend I	Trend II	[UN]
	2002:	5.00 [in %]	{4.00...30.00}	+	+
2.2.4.	Undernourished people	Data Range	Trend I	Trend II	[UN]
	2001:	0.00 [as % of total population]	{0.00...22.00}	+	
2.2.5.	One-year-olds fully immunized against measles	Data Range	Trend I	Trend II	[UN]
	2002:	99.00 [in %]	{57.00...99.00}	+	+
2.2.6.	Tuberculosis cases	Data Range	Trend I	Trend II	[UN]
	2002:	13.00 [per 100,000 people]	{3.00...609.00}	+	-
2.2.7.	People living with HIV/AIDS	Data Range	Trend I	Trend II	[UN]
	2003:	0.20 [as % of age 15-49]	{0.09...1.50}	-	-

2.3. Education 16.7% A

2.3.1.	Adult literacy	Data Range	Trend I	Trend II	[UN]
	2002:	99.00 [as % age 15 and above]	{41.50...99.80}	o	o
2.3.2.	Youth literacy	Data Range	Trend I	Trend II	[UN]
	2002:	99.80 [as % age 15-24]	{53.90...99.80}	o	o
2.3.3.	Pre-primary gross enrolment	Data Range	Trend I	Trend II	[UNESCO]
	2001:	90.00 [as % of relevant age group]	{5.00...120.00}	-	-
2.3.4.	Primary gross enrolment	Data Range	Trend I	Trend II	[UNESCO]
	2001:	102.00 [as % of relevant age group]	{73.00...121.23}	o	o
2.3.5.	Secondary gross enrolment	Data Range	Trend I	Trend II	[UNESCO]
	2000:	128.23 [as % of relevant age group]	{24.00...158.00}	+	+

2.4.	Employment and income	16.7%	A
2.4.1.	<u>Acceptable conditions of work</u>		
2.4.1.1.	<u>Minimum wages</u> No national minimum wage is mandated legally, but national labor agreements effectively set a wage floor. The lowest wage paid is sufficient to provide a decent standard of living for a worker and family.		[US Dept]
2.4.1.2.	<u>Weekly working hours</u> A 37-hour workweek is the norm, established by contract, not by law.		[US Dept]
2.4.1.3.	<u>Health & safety</u> The law prescribes extensive safety and health standards. Workers may remove themselves from hazardous situations or weapons production without jeopardizing their employment rights, and legal protections cover workers who file complaints about unsafe or unhealthy conditions.		[US Dept]
2.4.2.	Unemployment rate	Data Range	Trend I Trend II
	2003: 5.50 [as % of labor force]	{1.50...19.60}	+ -
2.4.3.	Long-term unemployment rate	Data Range	Trend I Trend II
	2002: 0.80 [as % of labour force]	{0.20...11.10}	+ +
2.4.4.	GDP per capita	Data Range	Trend I Trend II
	2002: 30,940.00 [in USD (PPP)]	{1,940.00...61,190.00}	+ +
2.4.5.	Share of income: richest 20% to poorest 20%	Data Range	Trend I Trend II
	1997: 4.30 [richest 20% to poorest 20%]	{3.40...19.30}	- -
2.4.6.	Inflation	Data Range	Trend I Trend II
	2002: 2.40 [in %]	{-0.90...45.00}	- o
2.5.	Personal safety	16.7%	A+
2.5.1.	Recorded homicides	Data Range	Trend I Trend II
	2001: 0.97 [per 100,000 people]	{0.75...23.18}	+ +
	52.00 [total number]		
2.5.2.	Prison population	Data Range	Trend I Trend II
	2002: 64.00 [per 100,000 people]	{29.00...701.00}	+ -
2.6.	Population change	16.7%	A
2.6.1.	Population change	Data Range	Trend I Trend II
	2003: 0.24 [as % of national population]	{-0.73...2.41}	+ +

3. Infrastructure 20.0% A-

3.1. Basic Infrastructure 25.0% A

3.1.1.	Population with access to safe water	Data Range	Trend I	Trend II	
2000:	100.00 [as % of national population]	{39.00...100.00}	+		[UN]
3.1.2.	Population connected to sewerage	Data Range	Trend I	Trend II	
1998:	89.00 [as % of national population]	{51.20...98.10}	-	+	[OECD]
3.1.3.	Population connected to public waste water treatment	Data Range	Trend I	Trend II	
2002:	89.00 [as % of national population]	{16.60...98.10}	+	o	[OECD]
3.1.4.	Population served by municipal waste services	Data Range	Trend I	Trend II	
2000:	100.00 [as % of national population]	{73.00...100.00}			[OECD]

3.2. Medical facilities 25.0% B+

3.2.1.	Physicians	Data Range	Trend I	Trend II	
2003:	366.00 [per 100,000 people]	{16.00...607.00}	+	+	[UN]
3.2.2.	Hospital beds	Data Range	Trend I	Trend II	
1999:	4.50 [per 1,000 people]	{0.70...18.10}	-	-	[WB]
3.2.3.	Population with access to essential drugs	Data Range	Trend I	Trend II	
1999:	100.00 [as % of national population]	{49.00...100.00}			[UN]
3.2.4.	Overall health system performance (Index WHO)	Data Range	Trend I	Trend II	
1997:	34.00 [Rank]	{1.00...144.00}			[WHO]

3.3. Educational facilities 25.0% B+

3.3.1.	Pupil-teacher ratio by level of education				
3.3.1.1.	Pre-primary pupil-teacher ratio	Data Range	Trend I	Trend II	
2001:	6.00 [pupils per teacher]	{5.00...43.00}	o	-	[UNESCO]
3.3.1.2.	Primary pupil-teacher ratio	Data Range	Trend I	Trend II	
2001:	10.00 [pupils per teacher]	{7.00...44.00}	+		[UNESCO]
3.3.1.3.	Secondary pupil-teacher ratio	Data Range	Trend I	Trend II	
2001:	10.00 [pupils per teacher]	{8.00...38.00}	+		[UNESCO]
3.3.2.	Public libraries				
3.3.2.1.	Number of public libraries	Data Range	Trend I	Trend II	
1997:	169.32 [number of service stations per 100,000 people]	{2.11...699.99}	-	-	[UNESCO]
	892.00 [total number of service stations]				
3.3.2.2.	Number of volumes in public libraries	Data Range	Trend I	Trend II	
1999:	5.47 [per capita]	{0.19...7.81}	-	-	[UNESCO]
	29,044.00 [in 1,000]				

3.4. Access to information flows 25.0% A+

3.4.1. Telecommunication

3.4.1.1. Main telephone lines

		Data Range	Trend I	Trend II
2002:	689.00 [per 1,000 people]	{25.00...797.00}	+	-

[UN]

3.4.1.2. Cellular mobile subscribers

		Data Range	Trend I	Trend II
2002:	833.00 [per 1,000 people]	{8.00...1,061.00}	+	+

[UN]

3.4.2. Televisions

		Data Range	Trend I	Trend II
2000:	808.00 [per 1,000 people]	{78.00...830.00}	+	+

[WRI]

3.4.3. Internet

3.4.3.1. Personal computers

		Data Range	Trend I	Trend II
2002:	576.82 [per 1,000 people]	{4.00...708.67}	+	+

[WB]

3.4.3.2. Internet users

		Data Range	Trend I	Trend II
2002:	512.80 [per 1,000 people]	{10.30...647.90}	+	+

[UN]

1.	Institutional Capacity and Politics		10.0%	A
1.1.	Institutional capacity		33.3%	A-
1.1.1.	<u>Ministry of the environment</u> The country has institutionalized a ministry of the environment.			[UNEP]
1.1.2.	<u>National environmental agency</u> The country has institutionalized a national environmental agency.			[UNEP]
1.1.3.	<u>Council of environmental experts</u> The country has institutionalized a council of environmental experts.			[EEAC]
1.1.4.	<u>Participation of major groups in decision making process</u> According to Agenda 21 of the UN Commission on Sustainable Development, the country promotes broad public participation in decision-making for the achievement of sustainable development.			[UN]
1.1.5.	<u>Environmental impact assessment (EIA) legislation</u> The country has implemented national EIA legislation.			[UN]
1.1.6.	<u>Article in the constitution</u> The country has not institutionalized an article on the protection of the environment in the constitution.			[oekom]
1.2.	Political program		33.3%	A-
1.2.1.	<u>National state-of-the environment report</u> The country has recently published a national state-of-the environment report.			[UNEP]
1.2.2.	<u>National Agenda 21/sustainable development strategy</u> According to Agenda 21 of the UN Commission on Sustainable Development, the country has adopted a national strategy for sustainable development based on Agenda 21.			[UN]
1.2.3.	<u>Sustainable development indicators program</u> According to Agenda 21 of the UN Commission on Sustainable Development, the country has developed indicators of sustainable development in national decision-making.			[UN]
1.2.4.	<u>Local Agenda 21 initiatives</u> According to Agenda 21 of the UN Commission on Sustainable Development, local Agenda 21 initiatives have been established in the country.			[UN]
1.2.5.	<u>Public R&D expenditure for environmental protection</u>	Data Range	Trend I	Trend II
	1998: 3.70 [as % of total R&D budget appropriations]	{0.60...5.40}	-	+
1.2.6.	<u>Pollution abatement and control expenditure</u>	Data Range	Trend I	Trend II
	1996: 0.90 [as % of GDP]	{0.30...2.40}		
1.3.	Participation in international treaties		33.3%	A+
1.3.1.	<u>Kyoto Protocol to the United Nations Framework Convention on Climate Change</u> The country has ratified the Kyoto Protocol to the United Nations Framework Convention on Climate Change.			[UN]
1.3.2.	<u>Convention on Biological Diversity</u> The country has ratified the Convention on Biological Diversity.			[UNEP]
1.3.3.	<u>Cartagena Protocol on Biosafety</u> The country has ratified the Cartagena Protocol on Biosafety.			[UNEP]

2.1.	Soil and land use	50.0%	C
-------------	--------------------------	--------------	----------

2.1.1. Protected areas

2.1.1.1.	Protected areas (IUCN Categories I-V)	Data Range	Trend I	Trend II	
2003:	21.90 [as % of land area]	{0.60...32.40}	-	-	[WRI]

2.1.1.2.	Totally protected areas (IUCN Categories I-II)	Data Range	Trend I	Trend II	
2003:	0.25 [as % of land area]	{0.00...12.97}			[WRI]
	10.70 [in 1000 ha]				

2.1.2. Forest area

2.1.2.1.	Total forest area	Data Range	Trend I	Trend II	
2000:	10.70 [as % of land area]	{0.30...72.00}	-	+	[OECD, FAO]

2.1.2.2.	Natural forest area	Data Range	Trend I	Trend II	
2000:	25.18 [as % of total forest area]	{10.43...100.08}			[WRI]
	114.30 [in 1,000 ha]				

2.1.2.3.	Forests certified to FSC	Data Range	Trend I	Trend II	
2004:	0.00 [as % of total forest area]	{0.00...10.25}	o	o	[FSC, WRI]
	0.37 [in 1,000 ha]				

2.1.3.	Potential arable land	Data Range	Trend I	Trend II	
2000:	0.58 [in ha per people]	{0.00...4.36}			[FAO]
	3,081.00 [in 1,000 ha]				

2.1.4.	Land degradation (Index FAO)	Data Range	Trend I	Trend II	
2000:	63.00 [Index]	{18.00...340.00}			[FAO]

2.2.	Water	25.0%	D-
-------------	--------------	--------------	-----------

2.2.1.	Annual internal renewable water resources	Data Range	Trend I	Trend II	
2004:	1,116.30 [per capita in m3]	{127.50...582,191.80}	-	-	[WRI]

2.3.	Biodiversity	25.0%	D
-------------	---------------------	--------------	----------

2.3.1.	Mammal species known	Data Range	Trend I	Trend II	
2003:	43.00 [total number]	{11.00...515.00}	-	-	[OECD, WRI]

2.3.2.	Breeding bird species known	Data Range	Trend I	Trend II	
2003:	196.00 [total number]	{31.00...929.00}			[WRI]

2.3.3.	Reptile species known	Data Range	Trend I	Trend II	
2003:	9.00 [total number]	{0.00...876.00}	+	+	[OECD, WRI]

2.3.4.	Amphibian species known	Data Range	Trend I	Trend II	
2003:	15.00 [total number]	{0.00...358.00}			[WRI]

2.3.5.	Fish species known	Data Range	Trend I	Trend II	
2003:	70.00 [total number]	{7.00...5,749.00}			[WRI]

2.3.6.	Higher plant species known	Data Range	Trend I	Trend II	
2003:	1,450.00 [total number]	{377.00...29,375.00}			[WRI]

3.1. Soil constraints 16.7% B

3.1.1. Agriculture

3.1.1.1. Arable land		Data Range	Trend I	Trend II	
2002:	54.00 [as % of land area]	{0.07...54.40}	+	o	[WB, FAO]
3.1.1.2. Organic agriculture		Data Range	Trend I	Trend II	
2004:	6.65 [as % of total agricultural area]	{0.00...11.60}	+	+	[IFOAM]
3.1.1.3. Consumption of fertilizer		Data Range	Trend I	Trend II	
2001:	134.73 [in kg per hectare arable land]	{13.00...2,600.95}	+	+	[WRI]
	308.70 [in 1,000 tonnes]				
3.1.1.4. Consumption of pesticides		Data Range	Trend I	Trend II	
2002:	1.25 [in kg per hectare arable land]	{0.13...16.36}	+	+	[OECD]
	2,868.00 [in tonnes]				
3.1.2. Urban and built-up areas		Data Range	Trend I	Trend II	
1993:	113.51 [in m2 / capita]	{3.70...326.72}			[WRI]
	589.00 [in km3]				

3.2. Water constraints 16.7% A-

3.2.1. Annual freshwater withdrawals I		Data Range	Trend I	Trend II	
2000:	21.10 [as % of internal renewable water resources]	{0.10...323.30}	-	-	[WRI]
3.2.2. Annual freshwater withdrawals II		Data Range	Trend I	Trend II	
2000:	10.61 [in million m3 / GDP in billion USD]	{4.76...605.22}	+	+	[WRI]
	1.27 [in km3]				
3.2.3. Annual freshwater withdrawals III		Data Range	Trend I	Trend II	
2000:	238.07 [in m3 / capita]	{76.26...1,681.71}	-	-	[WRI]
	1.27 [in km3]				
3.2.4. Emissions of organic water pollutants		Data Range	Trend I	Trend II	
1998:	269.71 [tonnes / GDP in billion USD]	{84.31...820.52}	+	+	[WRI]
	83,590.70 [in kg per day]				

3.3. Biodiversity 16.7% A-

3.3.1.	Threatened mammal species		Data Range	Trend I	Trend II	
2002:	22.00 [as % of all species]	{0.00...71.10}				[OECD]
3.3.2.	Threatened breeding bird species		Data Range	Trend I	Trend II	
2002:	14.50 [as % of all breeding species]	{6.70...55.90}				[OECD]
3.3.3.	Threatened reptile species		Data Range	Trend I	Trend II	
2002:	0.00 [as % of all species]	{0.00...100.00}				[OECD]
3.3.4.	Threatened amphibian species		Data Range	Trend I	Trend II	
2002:	6.70 [as % of all species]	{0.00...100.00}				[OECD]
3.3.5.	Threatened fish species		Data Range	Trend I	Trend II	
2002:	15.80 [as % of all species]	{0.00...52.90}				[OECD]
3.3.6.	Threatened higher plant species		Data Range	Trend I	Trend II	
2002:	10.00 [as % of all species]	{0.70...42.50}				[OECD]

3.4. Air emissions 16.7% A

3.4.1.	Greenhouse gases					
3.4.1.1.	Carbon dioxide emissions		Data Range	Trend I	Trend II	
2001:	0.43 [in million tonnes / GDP in billion USD]	{0.26...1.88}		+	+	[IEA]
	51.59 [in million tonnes]					
3.4.1.2.	Methane emissions		Data Range	Trend I	Trend II	
2000:	48.19 [in 1,000 tonnes / GDP in billion USD]	{8.22...564.84}		+	+	[UNFCCC]
	5,753.00 [in 1,000 tonnes CO2 equivalent]					
3.4.1.3.	Nitrous oxide emissions		Data Range	Trend I	Trend II	
2000:	76.08 [in 1,000 tonnes / GDP in billion USD]	{6.24...204.78}		+	+	[UNFCCC]
	9,083.00 [in 1,000 tonnes CO2 equivalent]					
3.4.2.	Sulfur dioxide emissions		Data Range	Trend I	Trend II	
2000:	0.23 [in 1,000 tonnes / GDP in billion USD]	{0.11...10.75}		+	+	[UNFCCC]
	27.00 [in 1,000 tonnes]					
3.4.3.	Nitrogen oxides emissions		Data Range	Trend I	Trend II	
2000:	1.73 [in 1,000 tonnes / GDP in billion USD]	{0.58...6.97}		+	+	[UNFCCC]
	206.00 [in 1,000 tonnes]					
3.4.4.	Carbon monoxide emissions		Data Range	Trend I	Trend II	
2000:	5.39 [in 1,000 tonnes / GDP in billion USD]	{1.38...73.17}		+	-	[UNFCCC]
	643.00 [in 1,000 tonnes]					
3.4.5.	Volatile organic compounds emissions		Data Range	Trend I	Trend II	
2000:	1.10 [in 1,000 tonnes / GDP in billion USD]	{0.71...4.74}		+	+	[OECD]
	131.00 [in 1,000 tonnes]					
3.4.6.	Emissions of particulates		Data Range	Trend I	Trend II	
2000:	0.23 [in 1,000 tonnes / GDP in billion USD]	{0.07...4.81}				[OECD]
	28.00 [in 1,000 tonnes]					

3.5. Energy		16.7%	B
3.5.1.	Total primary energy supply I	Data Range	Trend I Trend II
2001:	0.16 [in million toe / GDP in billion USD]	{0.15...0.76}	+ +
	19.78 [in million toe]		
3.5.2.	Total primary energy supply II	Data Range	Trend I Trend II
2001:	43.60 [in MWh per capita]	{5.19...138.82}	- -
	19.78 [in million toe]		
3.5.3.	<u>Energy supply by primary source</u>		
3.5.3.1.	Total energy mix	Data Range	Trend I Trend II
2001:	19.29 [Index]	{0.00...72.87}	+ +
3.5.3.2.	Share of energy by coal	Data Range	Trend I Trend II
2001:	21.20 [as % of total primary energy supply]	{0.00...61.12}	+ -
	4.20 [in million toe]		
3.5.3.3.	Share of energy by oil	Data Range	Trend I Trend II
2001:	43.95 [as % of total primary energy supply]	{16.05...100.00}	+ +
	8.72 [in million toe]		
3.5.3.4.	Share of energy by gas	Data Range	Trend I Trend II
2001:	23.35 [as % of total primary energy supply]	{0.00...52.23}	+ +
	4.63 [in million toe]		
3.5.3.5.	Share of energy by nuclear power	Data Range	Trend I Trend II
2001:	0.00 [as % of total primary energy supply]	{0.00...40.42}	+ +
	0.00 [in million toe]		
3.5.3.6.	Share of energy by renewables and waste	Data Range	Trend I Trend II
2001:	11.50 [as % of total primary energy supply]	{0.00...72.88}	+ +
	2.28 [in million toe]		
3.5.4.	Energy consumption by the transport sector	Data Range	Trend I Trend II
2001:	0.04 [in million toe / GDP in billion USD]	{0.02...0.13}	+ +
	4.66 [in million toe]		
3.6. Waste		16.7%	A-
3.6.1.	Total amounts of waste generated	Data Range	Trend I Trend II
2002:	230.12 [in 1,000 tonnes / GDP in billion USD]	{80.68...1,051.74}	
	28,180.00 [in 1,000 tonnes]		
3.6.2.	Municipal waste generated	Data Range	Trend I Trend II
2002:	660.00 [in kg per capita]	{270.00...730.00}	- o
3.6.3.	Hazardous waste generated	Data Range	Trend I Trend II
1999:	3.32 [in 1,000 tonnes / GDP in billion USD]	{0.92...153.84}	- -
	386.00 [in 1,000 tonnes]		
3.6.4.	Nuclear waste generated	Data Range	Trend I Trend II
2001:	0.00 [in tonnes of heavy metal / GDP in billion USD]	{0.00...3.63}	+ +
	0.00 [in tonnes of heavy metal]		
3.6.5.	Paper and cardboard recycling	Data Range	Trend I Trend II
2002:	56.00 [as % of apparent consumption]	{7.00...72.00}	+ +
3.6.6.	Glass recycling	Data Range	Trend I Trend II
2002:	76.00 [as % of apparent consumption]	{13.00...95.00}	+ +